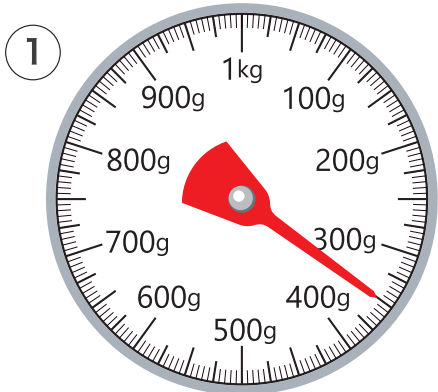
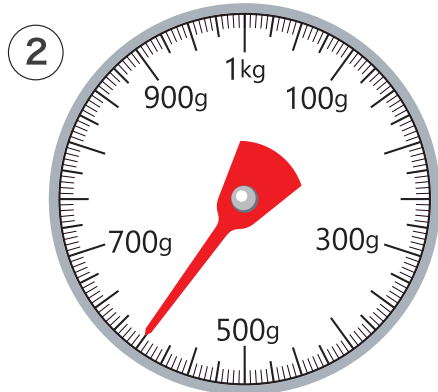
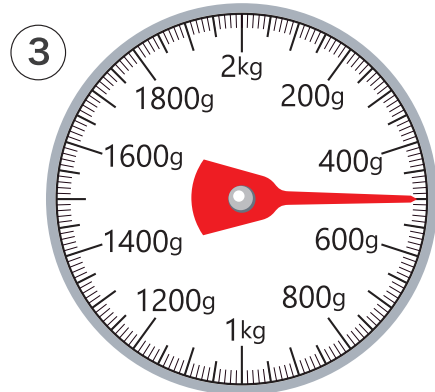


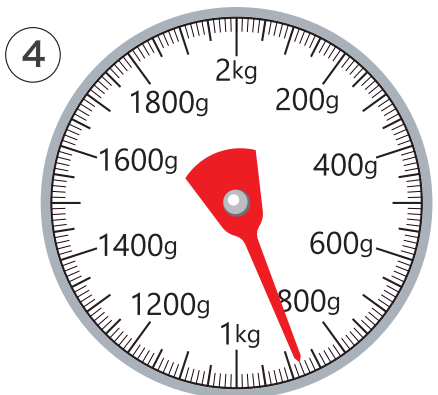
月	日
名前	

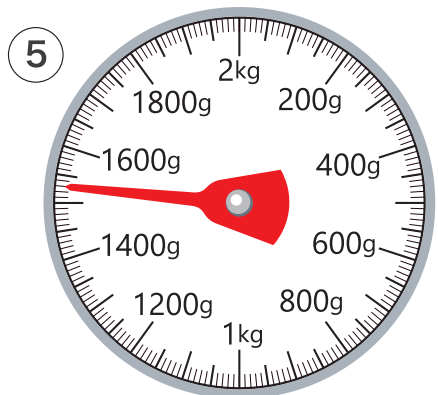
1 つぎの はかりの はりがさしている 重さは 何gでしょう。

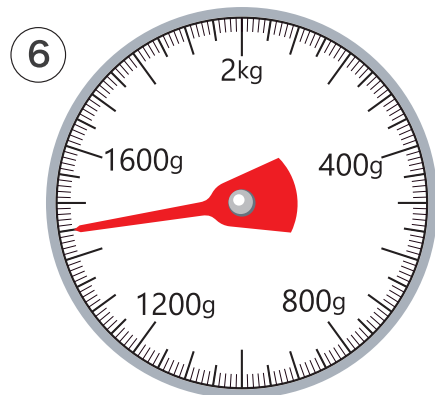








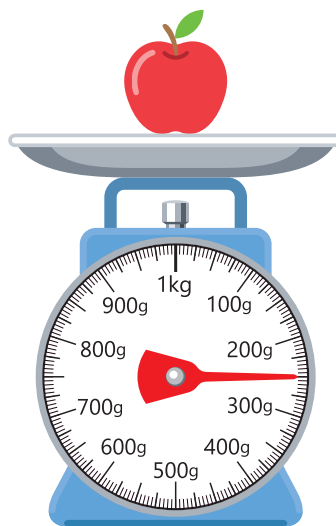





2 つぎの はかりを見て 答えましょう。

① このはかりでは何 kg まで  
はかれますか

② りんごの重さは何 g ですか



1 □ に あてはまる 数を 書きましょう。

①  $1\text{ kg} = \square\text{ g}$

②  $2000\text{ g} = \square\text{ kg}$

③  $6000\text{ g} = \square\text{ kg}$

④  $3280\text{ g} = \square\text{ kg} \square\text{ g}$

⑤  $5\text{ kg } 30\text{ g} = \square\text{ g}$

⑥  $2\text{ kg } 400\text{ g} = \square\text{ g}$

⑦  $1000\text{ kg} = \square\text{ t}$

⑧  $5\text{ t} = \square\text{ kg}$

⑨  $7600\text{ kg} = \square\text{ t} \square\text{ kg}$

2 □ に あてはまる 重さのたんいを 書きましょう。

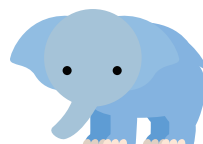
① みほさんの体重… 27 □

② 本の重さ… 200 □

③ 犬の重さ… 10 □

④ トラックの重さ… 10 □

⑤ ぞうの重さ… 5 □ 800 □



計算しましょう。

$$\textcircled{1} 200\text{ g} + 300\text{ g} = \boxed{\phantom{000}}\text{ g}$$

$$\textcircled{2} 500\text{ g} + 800\text{ g} = \boxed{\phantom{000}}\text{ kg } \boxed{\phantom{000}}\text{ g}$$

$$\textcircled{3} 600\text{ g} + 900\text{ g} = \boxed{\phantom{000}}\text{ kg } \boxed{\phantom{000}}\text{ g}$$

$$\textcircled{4} 700\text{ kg} + 400\text{ kg} = \boxed{\phantom{000}}\text{ t } \boxed{\phantom{000}}\text{ kg}$$

$$\textcircled{5} 3\text{ kg } 400\text{ g} + 600\text{ g} = \boxed{\phantom{000}}\text{ kg}$$

$$\textcircled{6} 5\text{ kg } 800\text{ g} + 340\text{ g} = \boxed{\phantom{000}}\text{ kg } \boxed{\phantom{000}}\text{ g}$$

$$\textcircled{7} 2\text{ kg } 350\text{ g} + 3\text{ kg } 420\text{ g} = \boxed{\phantom{000}}\text{ kg } \boxed{\phantom{000}}\text{ g}$$

$$\textcircled{8} 4\text{ kg } 200\text{ g} + 2\text{ kg } 800\text{ g} = \boxed{\phantom{000}}\text{ kg}$$

$$\textcircled{9} 300\text{ kg } 100\text{ g} + 700\text{ kg } 900\text{ g} = \boxed{\phantom{000}}\text{ t } \boxed{\phantom{000}}\text{ kg}$$

計算しましょう。

$$\textcircled{1} 700 \text{ g} - 300 \text{ g} = \boxed{\phantom{000}} \text{ g}$$

$$\textcircled{2} 1 \text{ kg} - 800 \text{ g} = \boxed{\phantom{000}} \text{ g}$$

$$\textcircled{3} 1 \text{ kg } 600 \text{ g} - 900 \text{ g} = \boxed{\phantom{000}} \text{ g}$$

$$\textcircled{4} 5 \text{ kg } 200 \text{ g} - 700 \text{ g} = \boxed{\phantom{000}} \text{ kg } \boxed{\phantom{000}} \text{ g}$$

$$\textcircled{5} 10 \text{ kg} - 3 \text{ kg } 700 \text{ g} = \boxed{\phantom{000}} \text{ kg } \boxed{\phantom{000}} \text{ g}$$

$$\textcircled{6} 8 \text{ kg } 600 \text{ g} - 5 \text{ kg } 300 \text{ g} = \boxed{\phantom{000}} \text{ kg } \boxed{\phantom{000}} \text{ g}$$

$$\textcircled{7} 4 \text{ kg } 300 \text{ g} - 1 \text{ kg } 700 \text{ g} = \boxed{\phantom{000}} \text{ kg } \boxed{\phantom{000}} \text{ g}$$

$$\textcircled{8} 7 \text{ kg } 200 \text{ g} - 3 \text{ kg } 900 \text{ g} = \boxed{\phantom{000}} \text{ kg } \boxed{\phantom{000}} \text{ g}$$

$$\textcircled{9} 1 \text{ t} - 300 \text{ kg} = \boxed{\phantom{000}} \text{ kg}$$